



# Enborne Community Solar Farm

23 September 2021

# 2MW Solar Farm

- Community owned site
- Held in trust through Poor's Allotment Charity and Enborne Parish Council
- Community owned farm proposed

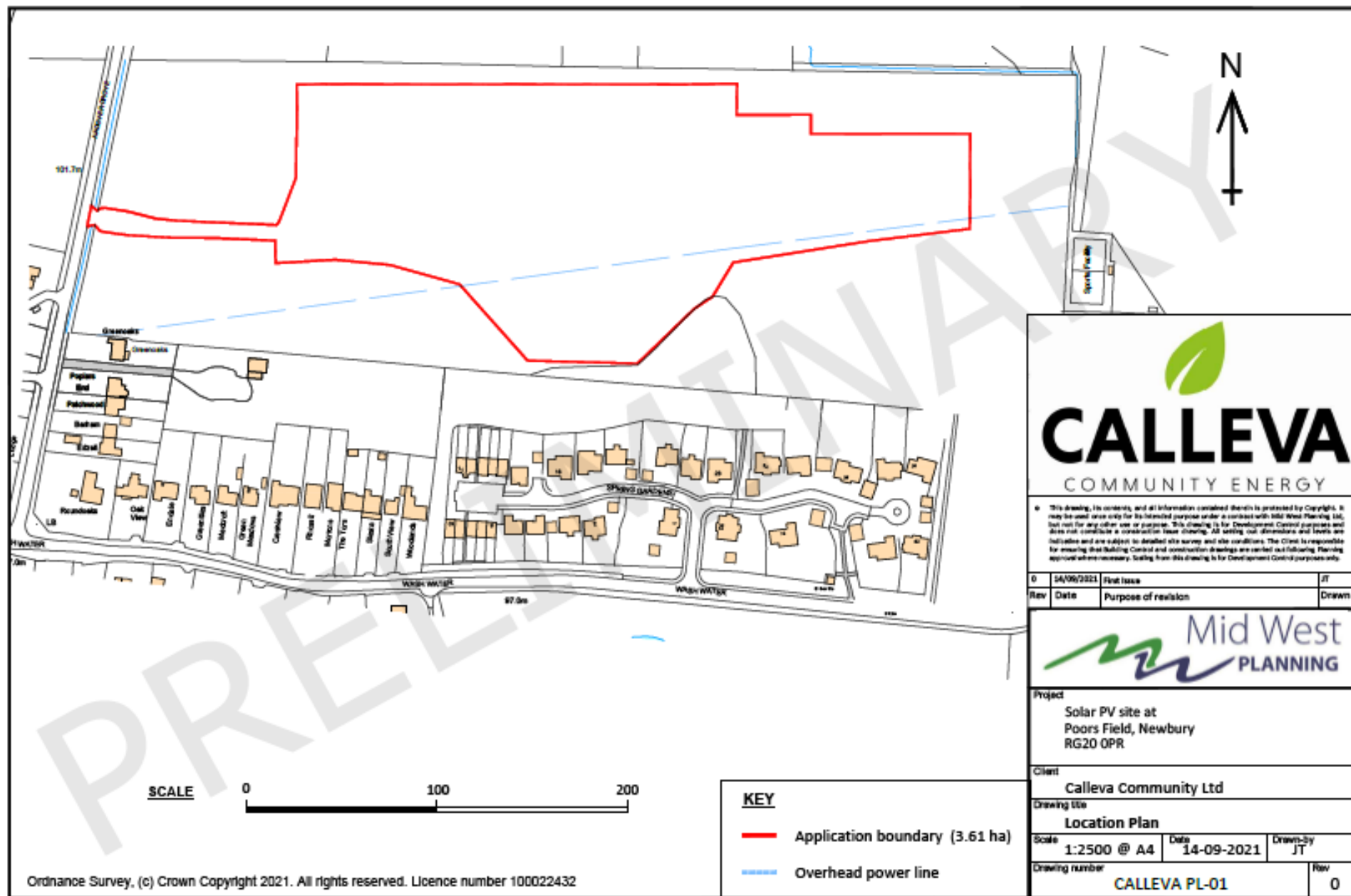
# Solar Farm Community Benefits

- 2,500,000 kWh clean energy generated per year
- Over 450 tonnes of carbon emissions saved per year
- Equates to electricity supply for c.700 average UK homes
- Or c.240 average UK homes including air source heat pumps and 10,000 miles electric car charging each year
- Leads to an increase in biodiversity and abundance -broad leaved plants, grasses, butterflies, bumblebees and birds (Westmill Solar Farm research 2016)
- Adds to local energy security
- Provides active learning environments for local schools and college students

# Calleva Community Energy

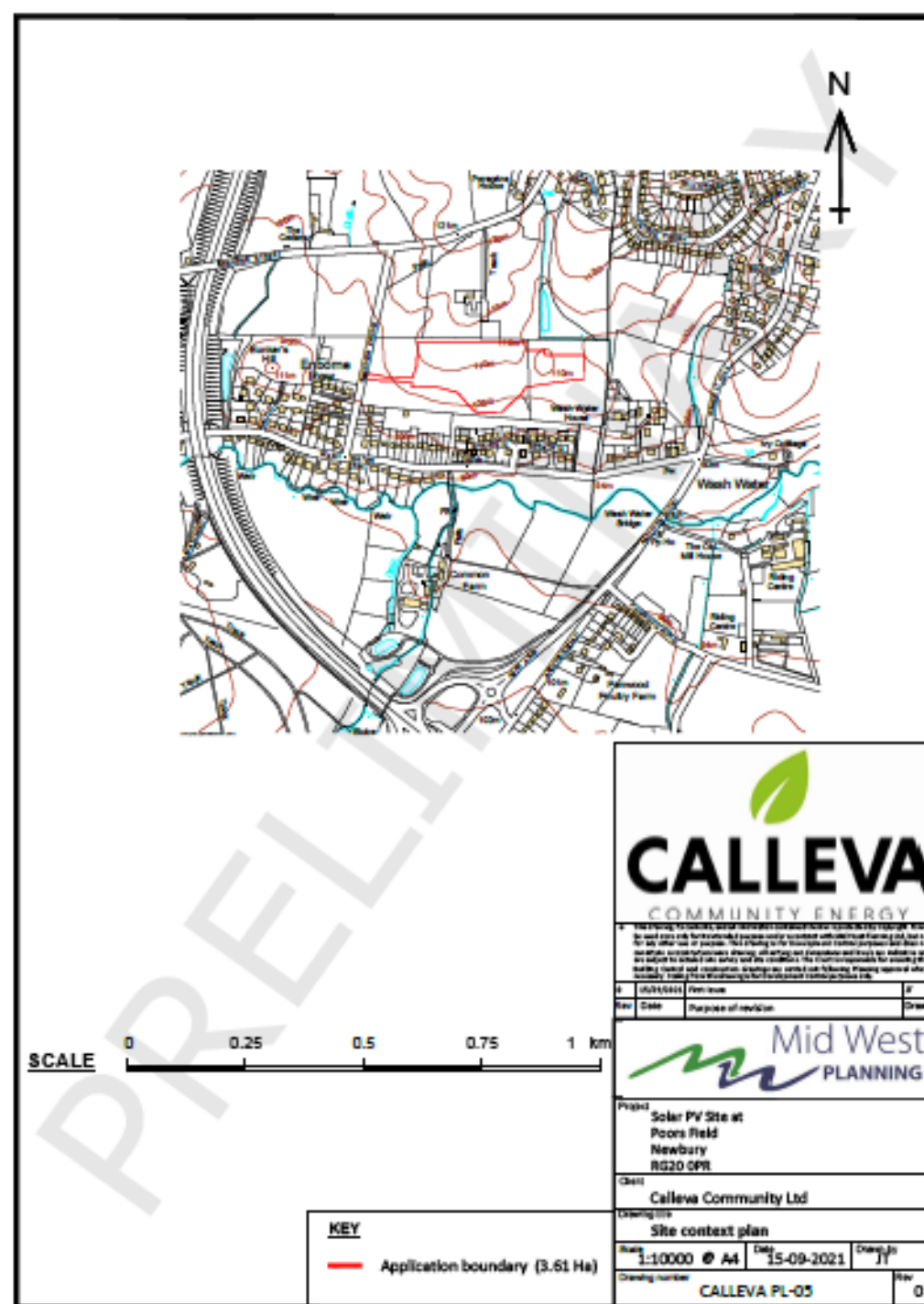
- A not for profit community energy hub
- Founded in the heart of Calleva Park, Aldermaston, Berkshire
- Our portfolio - community owned renewable energy, including rooftop solar and small solar farms
- We invest our surplus - improving energy efficiency and cutting carbon emissions amongst our partners and our community
- We are passionate in our ambition to help our community reach net carbon zero.

# Location Plan

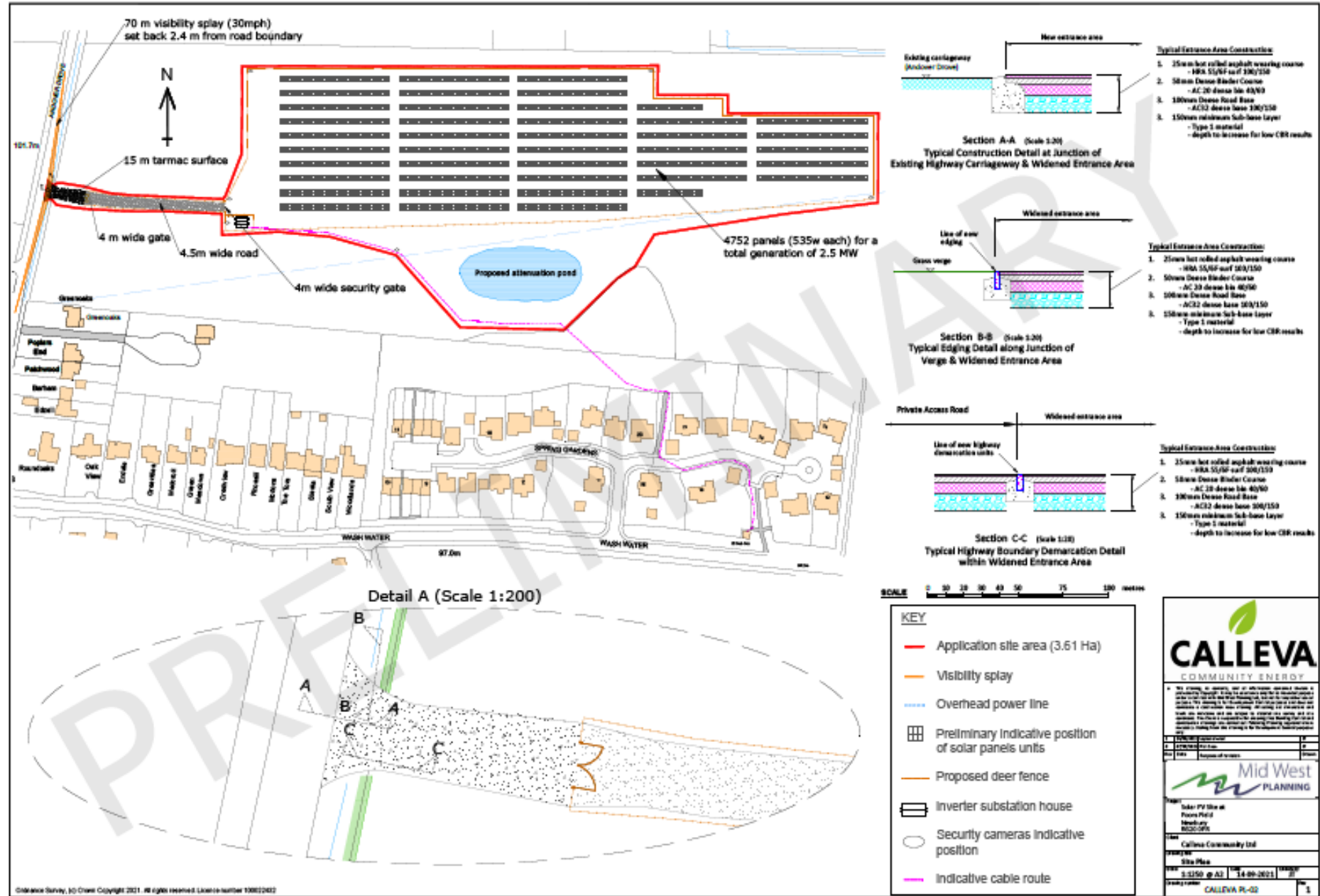


# Contextual Plan

Location of the proposed solar farm

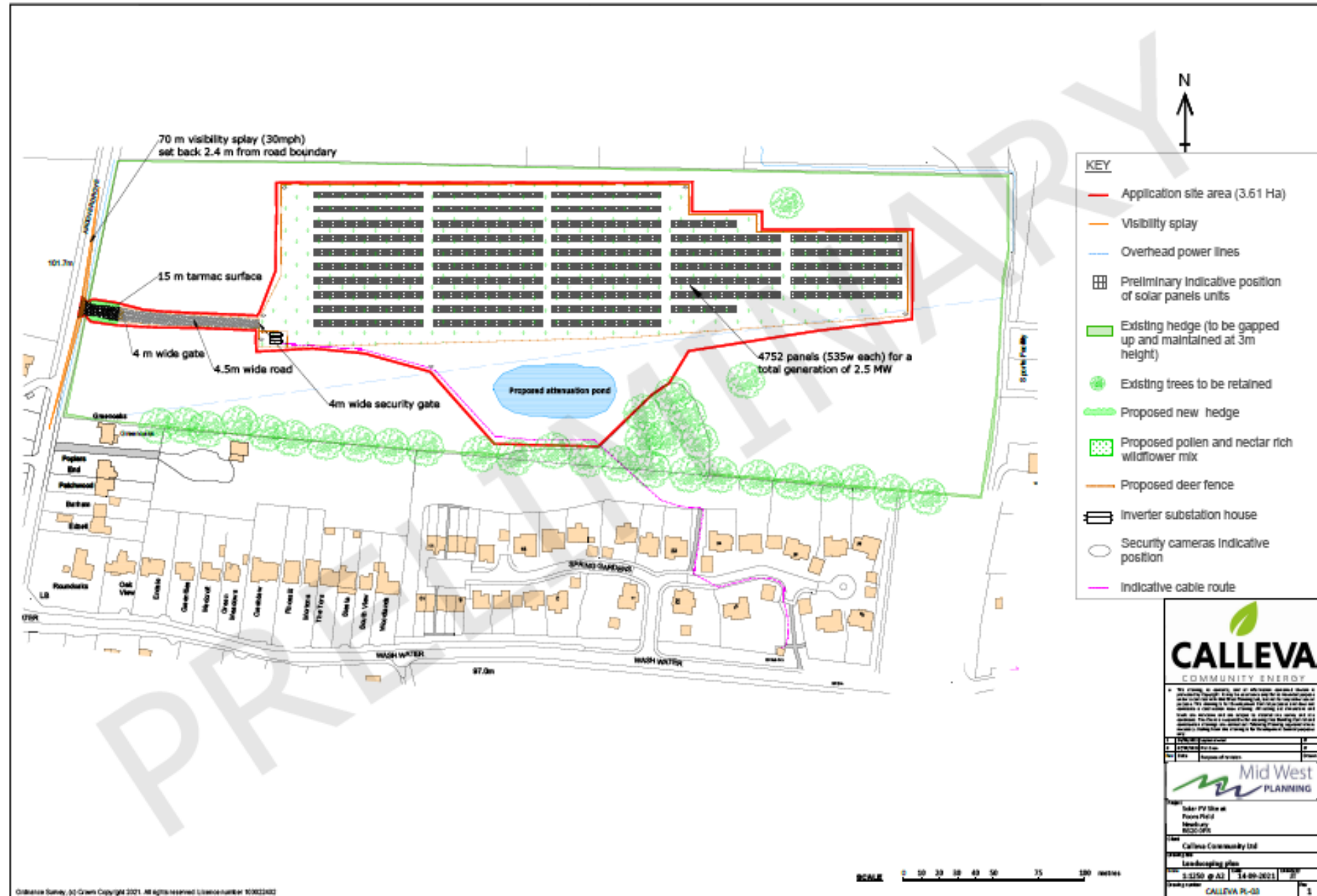


# Solar Farm Site Plan





# Solar Farm Landscaping Plan

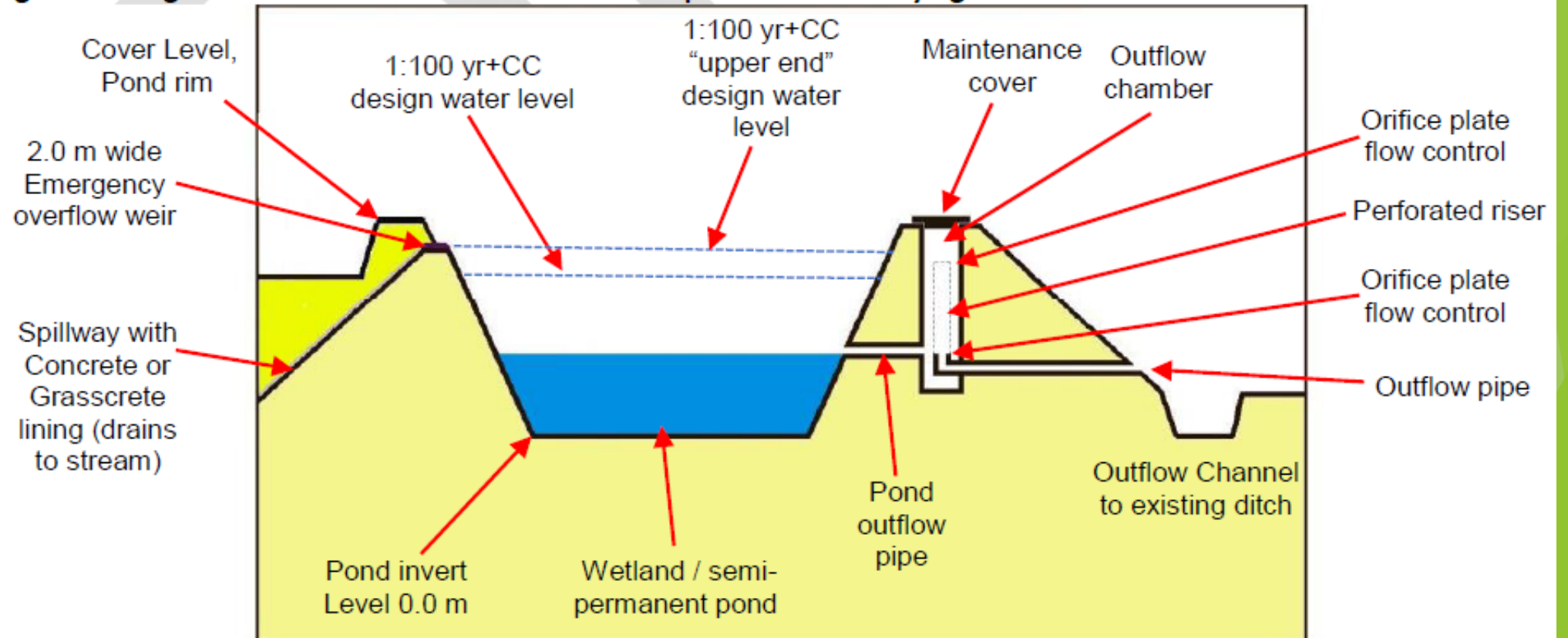




**Figure 22 Indicative location of the wetland, attenuation pond and associated structures, not to scale**

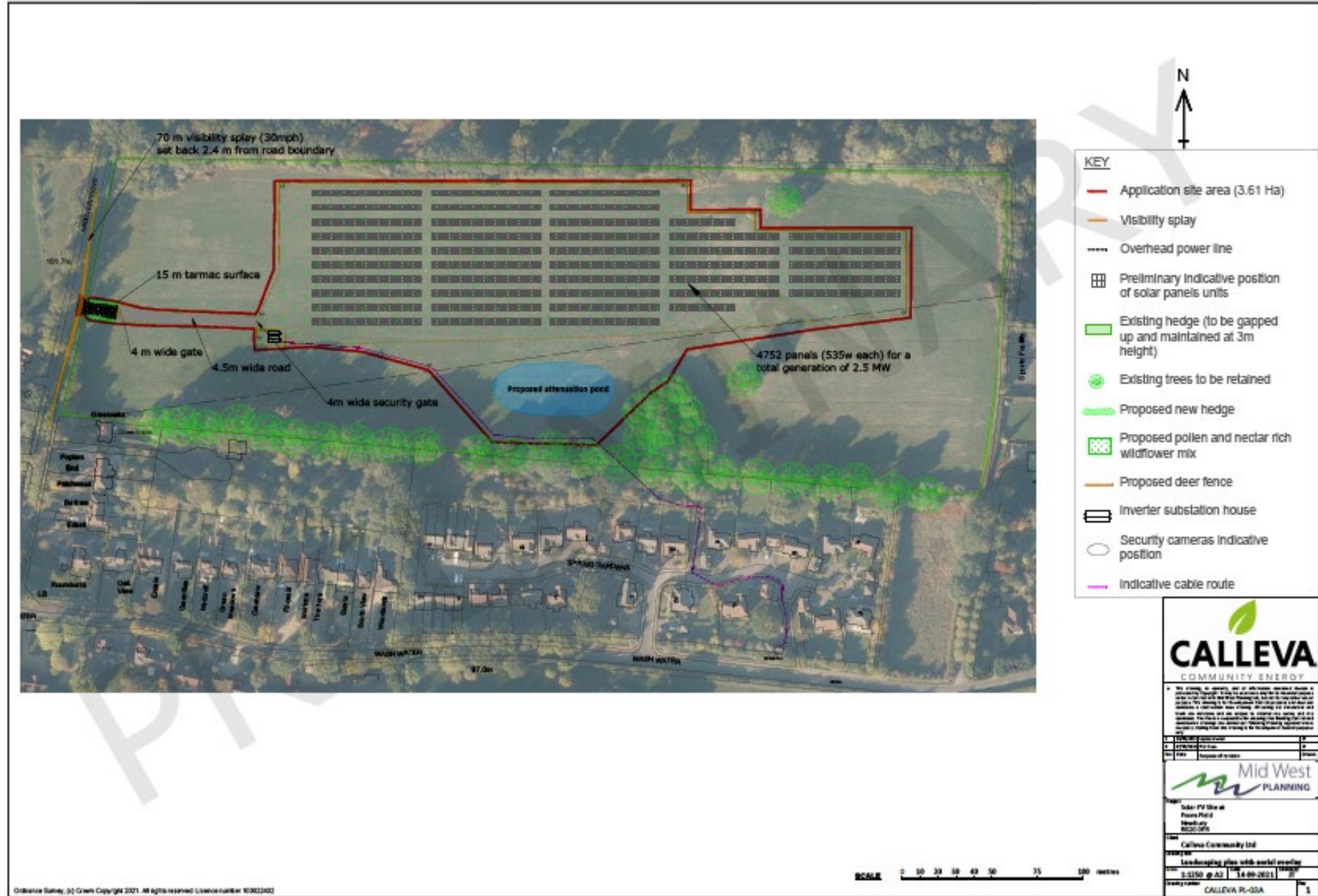
# Cross Section of Pond

**Figure 24 Diagrammatic cross-section of attenuation pond with underlying wetland**

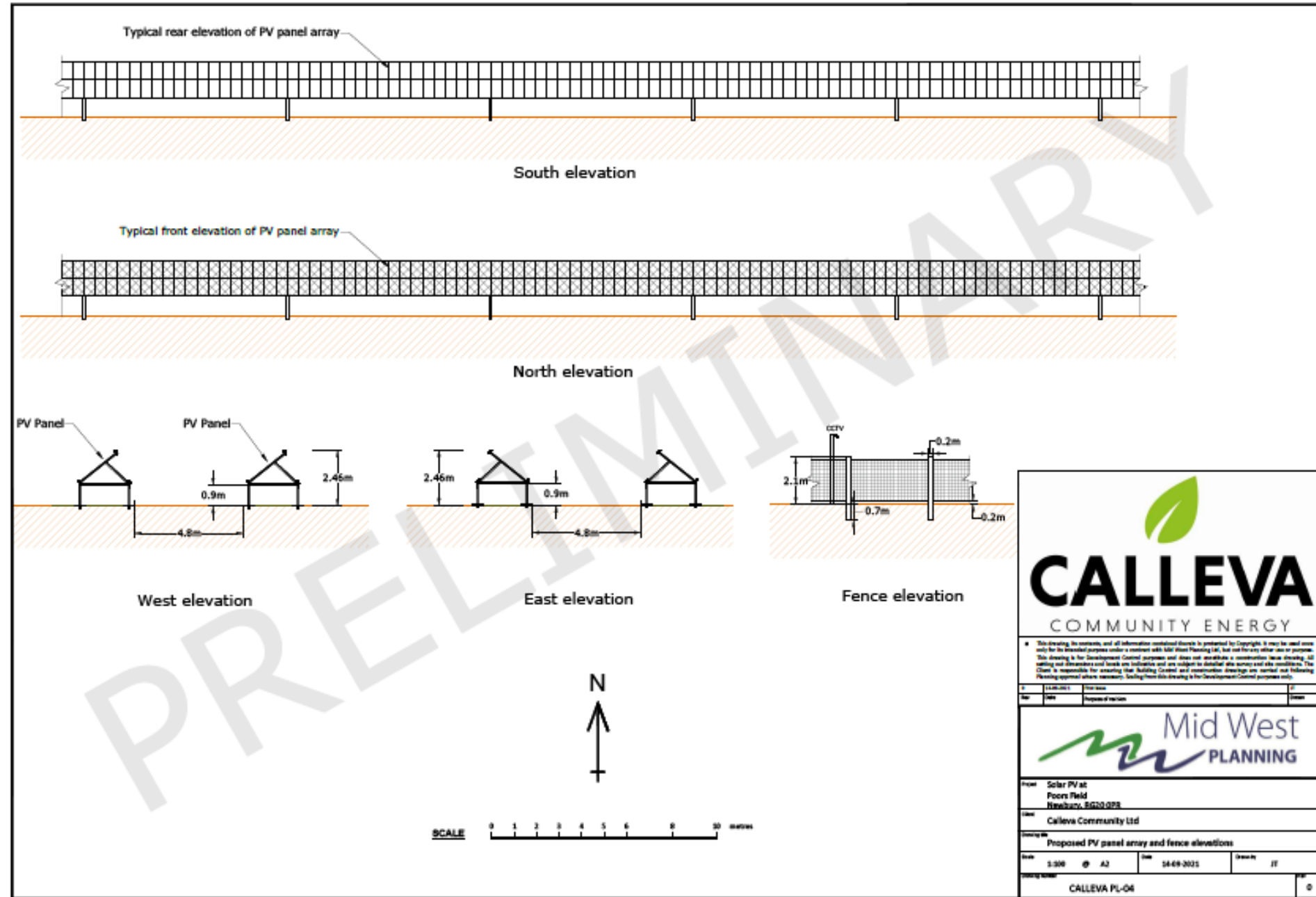




# Landscaping Plan with aerial image overlay



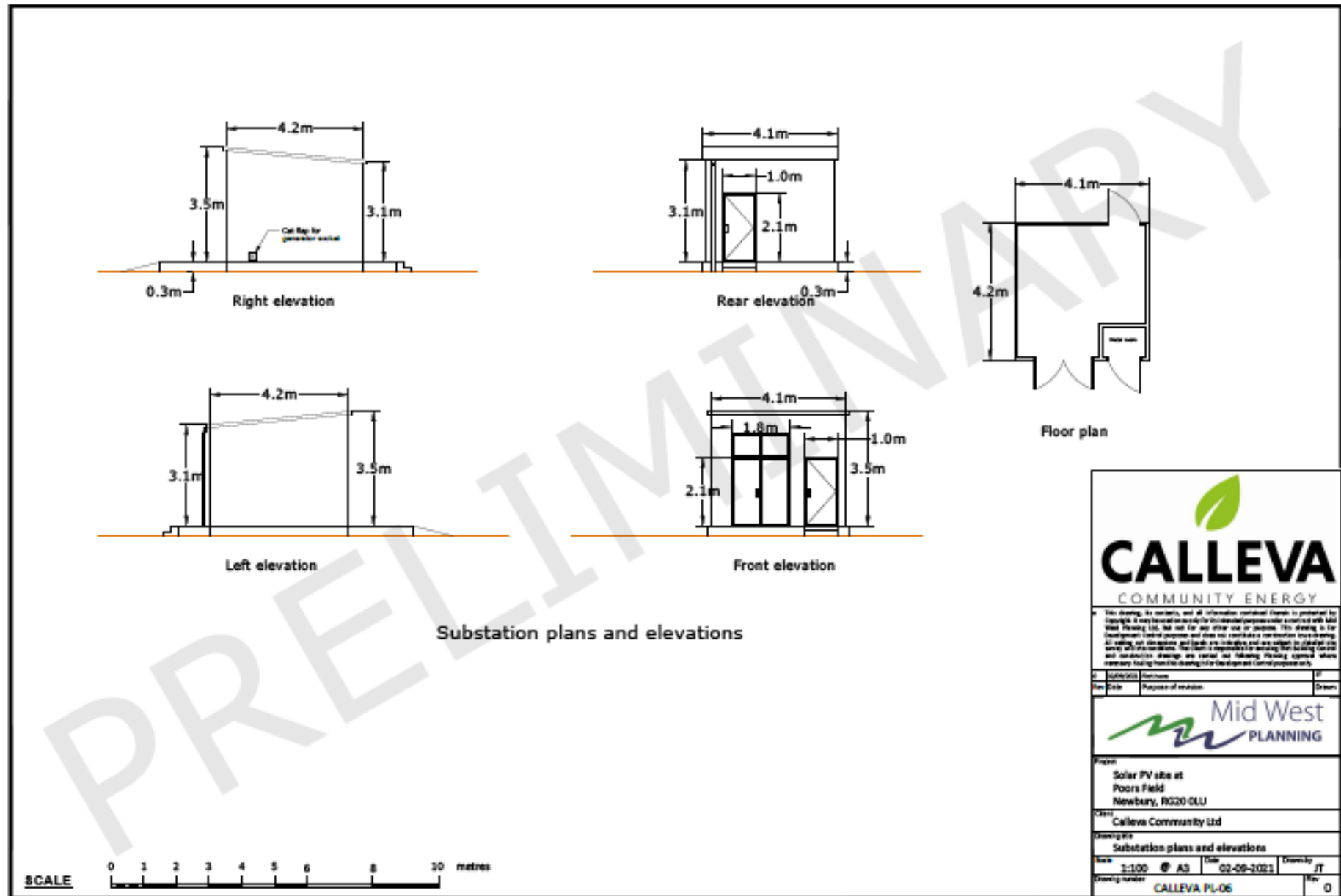
# Solar Panel Array & Deer Fence Elevations



# Example of Deer Fencing Proposed

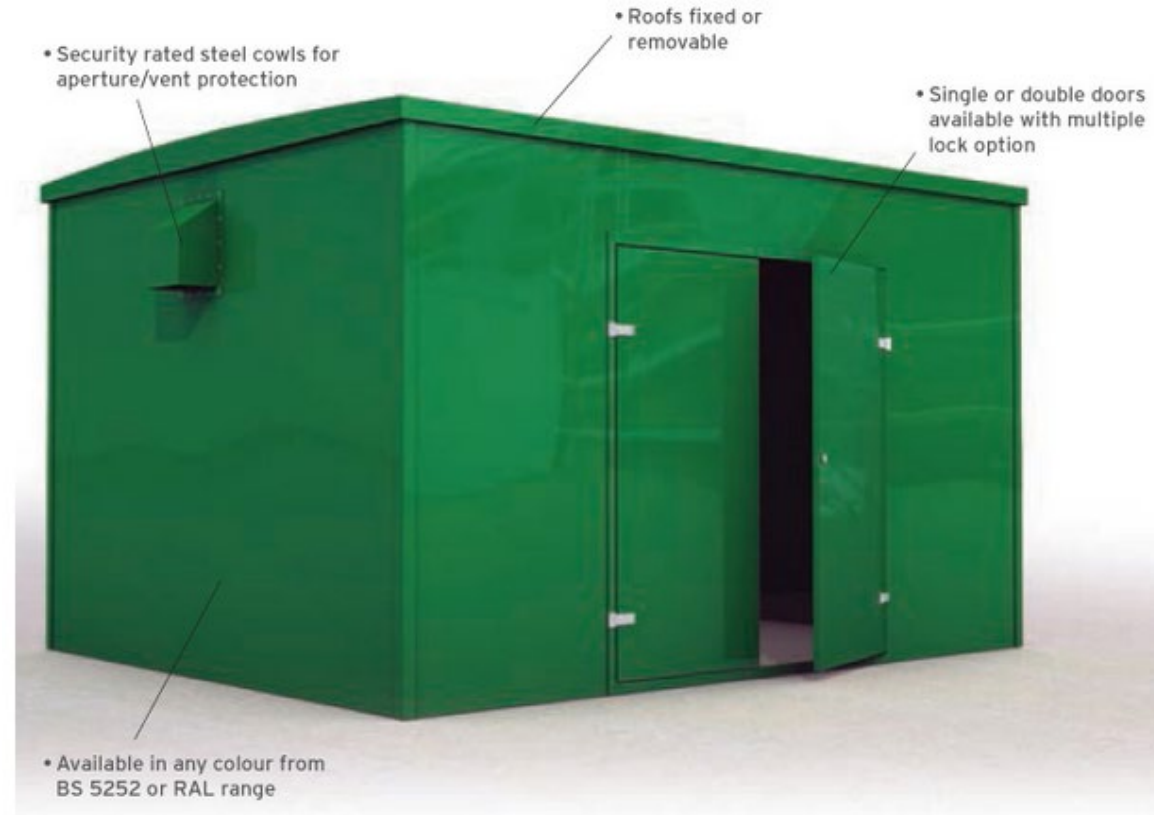


# Substation/ Inverter/ Transformer House Plans and Elevations





# Typical Inverter/ Substation House





# Key Planning Considerations

- Landscape and Visual Impacts
- Ecological impacts and environmental enhancement opportunities
- Surface water management and flood mitigation/prevention
- Transport impacts (during the construction phase)
- Protection of residential amenity and privacy
- Climate change benefits
- Energy security benefits
- Community benefits
- Educational benefits
- Maintenance of agricultural use of land